

FOR SALE

# CONGRESS PROFESSIONAL BUILDING

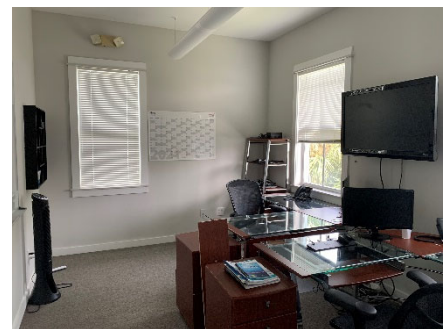
955 NW 17TH AVENUE, BUILDING D | DELRAY BEACH, FLORIDA



## INVESTMENT PROPERTY

### PROPERTY HIGHLIGHTS

- Less than a mile from I-95, minutes from Atlantic Ave.
- Beautiful build out with 6 offices, 2 upgraded kitchenettes, conference room, 2 restrooms & bamboo floors.
- 2 Story, Key West style, office condo.
- Located in the Grand Bahamas Professional Park.
- Income producing Property. 5.5% Cap rate.



### PROPERTY DESCRIPTION

Two-story professional office condo

### LOCATION

At the Northeast intersection of Congress avenue & Lake Ida rd, in Delray Beach, FL

### PRICE

\$1,385,000

### AVAILABILITY

2,432 SF commercial condo

### PARKING

Ample surface parking +/- 10 spaces

### FOR MORE INFORMATION:

Cheryl Spearling  
561-279-9251



info@homeandbusinesspartners.com

601 N. Congress Ave. Suite 428,  
Delray Beach, FL 33445

www.HBcommercialpartners.com